

HEALTH ★ HOPE



THE HEUGA CENTER FOR **MULTIPLE SCLEROSIS**
EMPOWERING PEOPLE WITH MS

2008 BOARD OF DIRECTORS
as of December 31, 2008

Jim Bergmann, MD
Howard Brinton, Vice President
Caren Deardorf
Bob Gardner
George P. Garmany, MD
Christina Groll
Bernice Kuca
Michelle Leighton
Sheila Marmion
Mike Marolt
Richard Neustedter, President
Jeff Olson
Holly Ong, Secretary
Gini Patterson, Past President
Randy Schapiro, MD
John Shipp, Treasurer
Mark Shircel
Michael Thomas



*MS is a chronic, unpredictable disease
of the central nervous system.*

MESSAGE FROM THE CHIEF EXECUTIVE OFFICER

Dear Supporters,

The Heuga Center for Multiple Sclerosis has embarked on a new era of positive change. Our organization is fully poised to embrace these changes and we are excited to share them with you. In the next year, you will be seeing the result of the time we spent in 2008 conducting organizational planning to maximize our mission achievement. This behind-the-scenes work by our tireless staff, board members and committed volunteers will enable us to provide even more high quality programs that profoundly change the lives of people with multiple sclerosis and their families.

In 2009 and 2010, you will see the rollout of a new organizational branding, a new and improved Web site, an increased collaborative effort with MS organizations, a new strategic plan, and a released wellness programs outcomes study – all with the goal to fulfill our mission of empowering people and families living with MS to transform and improve their quality of life.

Our goals and strategic initiatives will allow us to reach more people with MS and maximize your donor investment in our organization. Our relevance as an organization in the rapidly changing world of MS care management has never been stronger or more important.

We have an incredible team of professional staff both in our Edwards, Colo. office headquarters and throughout the U.S. and Canada. We are focused, together with our board of directors, to build on our past successes and continue enhancing our programs and services to achieve our mission.

I invite you to be a part of the excitement and continue to join us as we plan our future. I invite your feedback and participation.

Best regards,



Kim Sharkey
Chief Executive Officer

MESSAGE FROM THE PRESIDENT

Dear Friends,

2009 marks the 25th anniversary of our founding by Olympian Jimmie Heuga, and a quarter of a century of success in improving life quality for those living with the chronic disease of multiple sclerosis (MS). Thanks to your support, we have made a positive impact on people's lives. Our programs and services helped thousands of people in 2008, allowing us to reach hundreds of thousands of people in the past two decades.

The ability to dedicate more than 80 percent of donor dollars to our mission is critical to our success. It demonstrates careful stewardship of the funds you entrust with us. We are proud to report that this financial responsibility is recognized with a highly respected 4-star rating from Charity Navigator for the second year in a row.

We recently completed measurement and data collection on the results of our wellness programs and will be reporting the health outcomes in the next few months. The quantitative information compiled will confirm the positive life changes we are able to make through our pioneering efforts in MS care management. It provides tangible evidence that we are fulfilling our mission.

As we enter a new era for The Heuga Center, our highly qualified leadership team, governed by a board of directors comprised of business professionals and MS advocates, is strategically focused on expanding programs and services. We have launched new cause-related initiatives designed to increase brand awareness and ensure we are able to continue meeting the challenges of MS care management. Combining this with our financial strength positions us for mission fulfillment for another 25 years.

Now, more than ever, we need your support. This unique economic environment presents new complications as well as opportunities for growth. Your continued passion for our mission is the catalyst we need to make things happen. Thank you again for all that you do on behalf of people living with MS. We remain committed and honored to act on your behalf as we bring needed programs and services to the MS community.

Yours in health,



Richard Neustedter
President, Board of Directors

Mission, Vision & Core Values



OUR MISSION

The Heuga Center leads the way with comprehensive programs that empower people and families living with MS to transform and improve their quality of life.

OUR VISION

The Heuga Center for Multiple Sclerosis envisions a world in which every person impacted by MS maximizes their potential, improving their quality of life.

OUR CORE VALUES

Empowerment, Positive Approach, Education, Comprehensiveness, Innovation, Effectiveness, Empathy, Responsibility.



“CAN DO was such an informational program and we met some really awesome people. My husband and I aren't giving each other a gift this year for Christmas; instead we are giving The Heuga Center a small gift and hope others will be able to attend the CAN DO program.”

—Penny

CAN DO program participant living with MS



EMPOWERMENT Empower people to acquire the knowledge, tools and information they need to achieve a high quality of life and a sense of control over MS

POSITIVE APPROACH Embrace a positive, “can do” philosophy and perspective that complements the traditional medical model and standard of care to address people’s mental, physical and emotional needs

EDUCATION Provide unique offerings to build knowledge, skills, tools and motivation for people and families living with MS

COMPREHENSIVENESS Recognize that MS affects many people, and ensure that the quality of life needs of both people with MS and their support partners are met

INNOVATION Deliver client-centered programs via an interdisciplinary team dedicated to developing a personalized prescription for overall health and MS management

EFFECTIVENESS Demonstrate value and impact through the practice of evidence-based medicine and achievement of the highest possible outcomes

EMPATHY Deliver programs and services with caring, understanding and commitment

RESPONSIBILITY Demonstrate highest integrity in areas of programming, privacy, fiscal responsibility and organizational transparency

HEUGA CENTER PROGRAMS

CAN DO®—The Heuga Center’s five-day CAN DO programs are intensive health and wellness education programs that teach people with MS and their families how to take charge of their lives within the context of their disease. Programs focus on overall management of the whole person with MS, emphasizing health, physical fitness, nutrition, psychological well-being and social interaction. The culmination of the health program for each participant is a personalized lifestyle strategy that includes comprehensive recommendations and ways to seek out and acquire needed resources based on their specific goals. The staff-to-participant ratio guarantees that each person receives personal attention. Participants are able to speak with health care professionals in an intimate, relaxed environment.

In addition to the focus on the participant with MS, there is a separate track for support partners. Spouses, family members or friends are encouraged to attend the CAN DO program with the participant with MS. Special sessions are devoted to this group of support partners, addressing the needs, concerns and challenges brought into their lives by a loved one with MS. Each CAN DO program is limited to 25 participants and their support partners.

“This was the single best thing I have done for my MS in 11 years. The staff and leaders are incredible. I feel as though I know my body in a different light and I am more prepared to fight the good fight. The CAN DO program is a definite must!”

—Angela M.
CAN DO program participant living with MS

CAN DO 2[®]—Because the symptoms of MS fluctuate over time, the two-day CAN DO 2 program gives the CAN DO program's past participants a way to update and modify their personal program. This health and wellness program re-evaluates participants' physical abilities, updates their current exercise and lifestyle program, and provides renewed motivation for maintaining health. Each CAN DO 2 program is limited to 15 participants and their support partners.

JUMPSTART[®]—The Heuga Center created JUMPSTART in 2000 because of the high demand for health and wellness education programs as a cost-effective alternative for people living with MS and their family members. Offered at no charge, JUMPSTART is a one-day program consisting of educational presentations and workshops that emphasize health and wellness. Topics include disease and symptom management, exercise, nutrition and stress management.



Programs & Events

MS affects 2.5 million people worldwide.

Approximately 400,000 people in the U.S. have MS.

2008 SUMMARY

Provided programs and services for over 10,000 people
14 Health care professional symposiums in eight states
12 One-day JUMPSTART programs in eight states
9 Patient seminars in five states
2 Five-day CAN DO programs
26 Fundraising events in the U.S. and Canada



CAN DO 2008

May 14-18 - Vail, CO

November 5-9 - Vail, CO

JUMPSTART 2008

April 19 - Grand Junction, CO

May 3 - Sioux City, IA

June 14 - Cleveland, OH

July 23 - Glenwood Springs, CO

July 26 - Boulder, CO

August 16 - Des Moines, IA

September 6 - Philadelphia, PA

September 7 - Allentown, PA

September 27 - Durango, CO

October 4 - Anchorage, AK

October 11 - Indianapolis, IN

October 18 - Bozeman, MT

November 15 - Louisville, KY



INTERNET

The Heuga Center also participates in various teleconferences and webinars, reaching tens of thousands of people each year through:

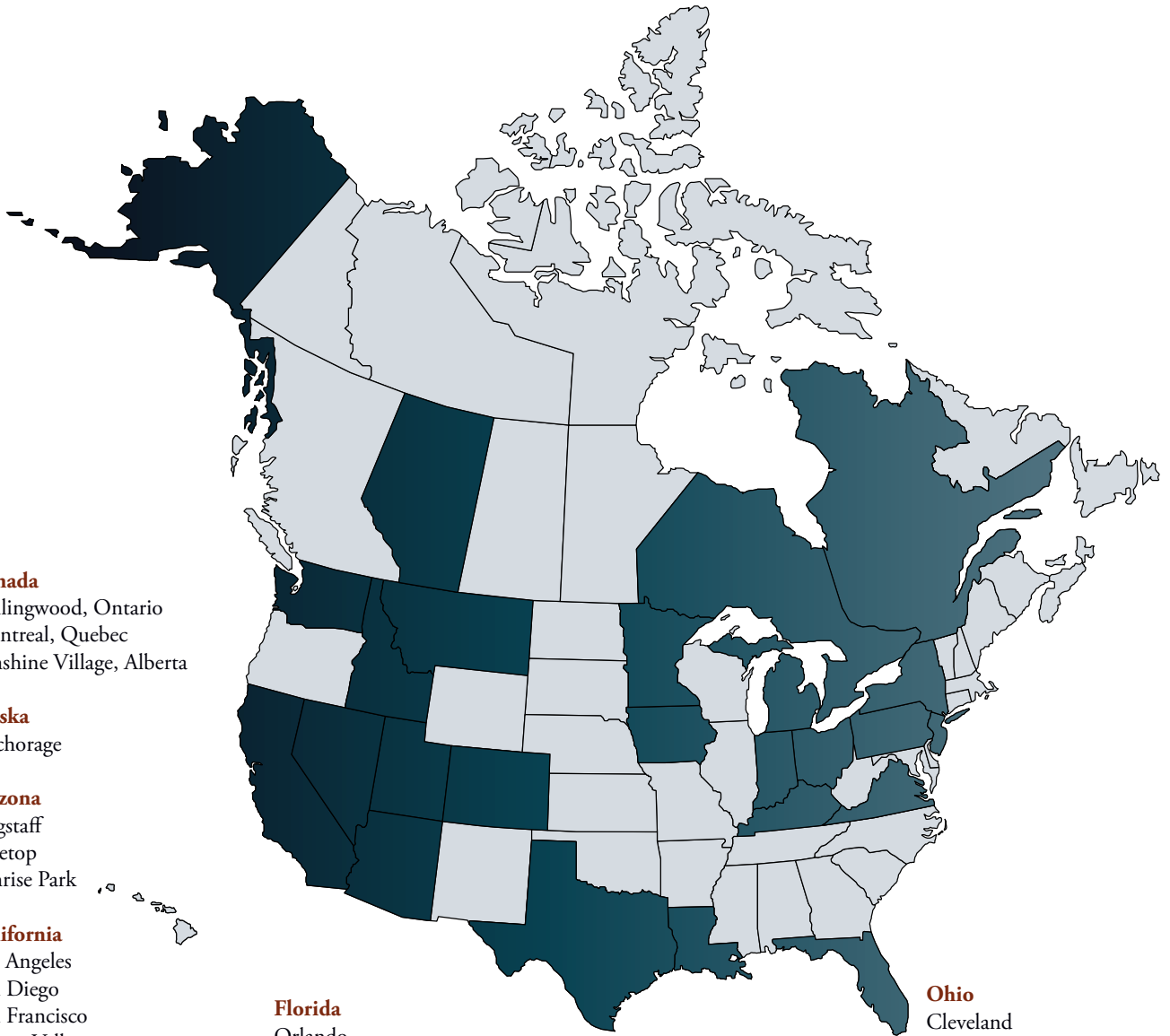
The Heuga Center for MS Web site at WWW.HEUGA.ORG

Vertical Express for MS Web site at WWW.VERTICAL EXPRESS.ORG

YOU CAN! educational MS articles at WWW.NMSS.ORG

MS is one of the most common neurological disease among adults between the ages of 20 and 50.

IN 2008 THE HEUGA CENTER'S PROGRAMS, SERVICES AND EVENTS REACHED ACROSS NORTH AMERICA



Canada
 Collingwood, Ontario
 Montreal, Quebec
 Sunshine Village, Alberta

Alaska
 Anchorage

Arizona
 Flagstaff
 Pinetop
 Sunrise Park

California
 Los Angeles
 San Diego
 San Francisco
 Squaw Valley

Colorado
 Avon
 Beaver Creek
 Bond
 Boulder
 Colorado Springs
 Denver
 Durango
 Eagle
 Edwards
 Glenwood Springs
 Grand Junction
 Nederland
 Sedalia
 Steamboat Springs
 Vail
 Westminster

Florida
 Orlando
 Tampa

Idaho
 Hayden Lake
 Schweitzer

Indiana
 Indianapolis

Iowa
 Des Moines
 Sioux City

Kentucky
 Louisville

Louisiana
 New Orleans

Michigan
 Boyne
 St. Clair Shores

Minnesota
 Minneapolis

Montana
 Big Sky
 Bozeman

Nevada
 Reno

New Jersey
 Hackensack

New York
 New York City

Ohio
 Cleveland

Pennsylvania
 Allentown
 Philadelphia

Texas
 Dallas

Utah
 Solitude

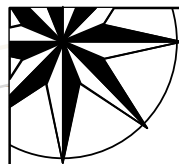
Virginia
 Charlottesville

Washington
 Crystal Mountain
 Seattle

Washington, D.C.

Fiscal Responsibility

FOR THE SECOND CONSECUTIVE YEAR, THE HEUGA CENTER FOR MULTIPLE SCLEROSIS EARNED CHARITY NAVIGATOR'S HIGHEST FOUR-STAR RATING FOR FISCAL RESPONSIBILITY.



★★★★
CHARITY NAVIGATOR
Four Star Charity

ABOUT OUR RATING

- ▶ We are in the top 18 percent of more than 5,000 charities rated by Charity Navigator in 2008
- ▶ The Heuga Center exceeds industry standards and outperforms most charities in Charity Navigator's Health: Diseases, Disorders, and Disciplines category
- ▶ More than 80 percent of funds were spent on programs. Nonprofit industry standards are 65 percent
- ▶ The Heuga Center is the only four-star nonprofit in Eagle County, Colorado

ABOUT CHARITY NAVIGATOR

The nation's largest and most-utilized, independent evaluator of nonprofit organizations

Rating system is based on multiple components including:

- ▶ Operational Efficiency – How we use money for programs and services delivery
- ▶ Organizational Capacity – How we prepare for the long-term organizational health of our organization

Donors rely on star-rating system to guide their dollars to the most responsible charities

- ▶ View our rating at www.charitynavigator.org

THE HEUGA CENTER IS A BETTER BUSINESS BUREAU (BBB) ACCREDITED CHARITY

- ▶ A BBB accredited charity is an organization that meets all 20 of the BBB Standards for Charity Accountability based on a review of information and materials provided by the organization
- ▶ View our rating at www.charityreports.bbb.org



JIMMIE HEUGA CENTER Endowment

The purpose of The Jimmie Heuga Center Endowment is to support The Heuga Center's programs and research activities now and in perpetuity. The Endowment is a 501(c)(3) organization independent from The Heuga Center. The Endowment was created in 1997 to ensure the Center's longevity and financial stability. The Endowment was the inspiration of Waldon (Brock) and Evalyn Byers, long-time supporters of The Heuga Center.

2008 ENDOWMENT BOARD MEMBERS

Brock Byers

Evalyn Byers

Bob Gardner

Dr. Richard Hicks

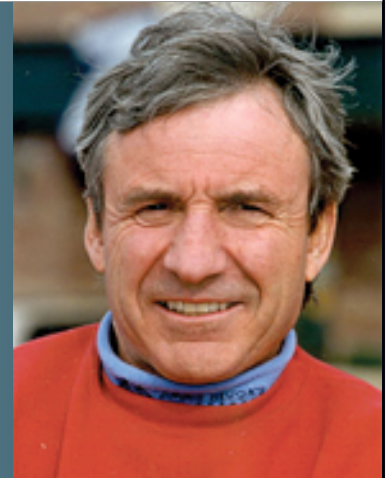
Richard Neustedter

Jeff Olson

Gini Patterson

Tomas Stone

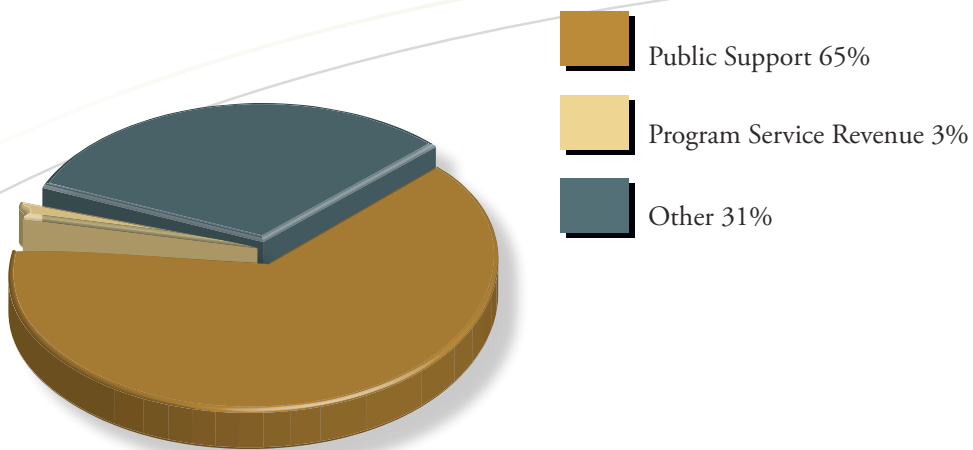
Jimmie Heuga, founder of The Heuga Center, was appointed the first campaign fundraising and public education director for the Jimmie Heuga Center Endowment. In this outreach role, Jimmie will raise awareness and solicit contributions to support The Heuga Center's health and wellness programs and services now and in perpetuity.



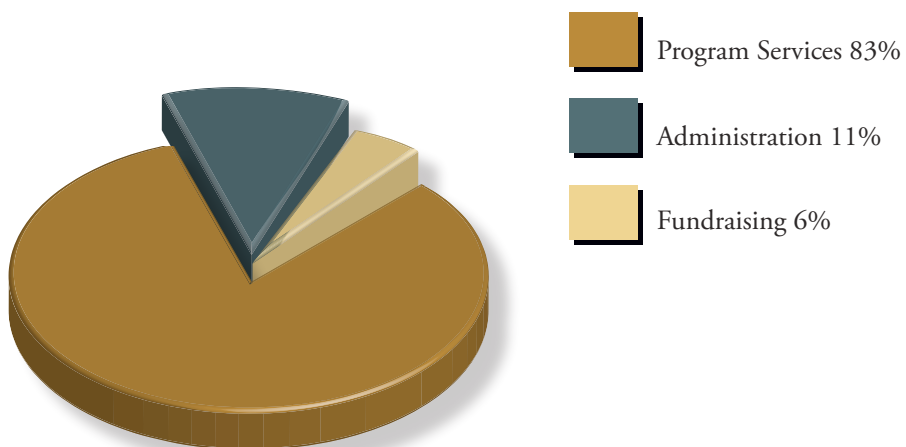
The Heuga Center's Endowment continues to grow. Once it reaches \$1 million dollars, we will use a portion of the interest earned to support our mission to provide health and wellness programs to people facing the challenges of living with multiple sclerosis.

Financials

REVENUE



EXPENSE



ASSETS	2008	2007
Cash and Cash Equivalants - Unrestricted	\$ 463,739	\$ 306,496
Cash and Cash Equivalents - Temporarily Restricted	214,835	81,250
Cash - Board Designated	282,463	180,000
Accounts Receivable	2,640	16,990
Prepaid Expenses	48,660	27,120
Inventory	51,221	9,480
Investments	200,000	-
Property and Equipment	876,518	904,265
Total Assets	\$ 2,140,076	\$ 1,525,601
LIABILITIES AND NET ASSETS	2008	2007
Liabilities		
Accounts Payable	\$ 34,522	\$ 13,699
Accrued Payroll Costs	36,327	38,435
Accrued Interest	2,412	2,466
Prepaid Rent	2,600	-
Property Taxes Payable	6,331	6,280
Deferred Event Revenue	107,626	132,476
Security Deposit	1,000	1,000
Line of Credit	-	-
Mortgage Note Payable	439,440	452,952
Lease Commitments	-	-
Total Liabilities	\$ 630,258	\$ 647,308
Net Assets		
Unrestricted		
Operating	\$ 575,442	\$ 165,730
Board Designated Stability Reserve	282,463	180,000
Net Investment in Fixed Assets	437,078	451,313
Temporarily Restricted	214,835	81,250
Total Net Assets	\$ 1,509,818	\$ 878,293
Total Liabilities and Net Assets	\$ 2,140,076	\$ 1,525,601

2008

REVENUE AND OTHER SUPPORT

	Unrestricted	Temporarily Restricted	Total
Special Event Income	\$ 857,237	\$ -	\$ 857,237
Less Special Event Direct Expense	(249,750)	-	(249,750)
Net Special Event Income	607,487	-	607,487
Grants	788,850	214,835	1,003,685
Contributions	161,106	-	161,106
Corporate Donations	90,000	-	90,000
Education, Seminars and Symposiums	68,740	-	68,740
Rental Income	31,200	-	31,200
Interest Income	9,440	-	9,440
Raffle and Sale of Merchandise	6,217	-	6,217
All Other	-	-	-
In-Kind Contributions	125,791	-	125,791
Net Assets Released from Restrictions	81,250	(81,250)	-

Total Revenue and Other Support \$ **1,970,081** \$ **133,585** \$ **2,103,666**

EXPENSE

Program Services	\$ 1,215,371	\$ -	\$ 1,215,371
Supporting Services			
Management and General	167,814	-	167,814
Fundraising	88,956	-	88,956
Total Expense	1,472,141	-	1,472,141
Change in Net Assets	497,940	133,585	631,525

Net Assets, Beginning of Year \$ **797,043** \$ **81,250** \$ **878,293**

Net Assets, End of Year \$ **1,294,983** \$ **214,835** \$ **1,509,818**

Donors

\$100,000 and above

Canadian Snow Express for MS
EMD Serono, Inc/Pfizer, Inc.
Jimmie Heuga Center Endowment
Teva Neuroscience

\$50,000 – \$99,999

Bayer HealthCare Pharmaceuticals
Inc.
Fred Alger Management, Inc.
Genentech Foundation
The Liniger Fund of The Denver
Foundation
Rolex Watch USA, Inc.

\$25,000 – \$49,999

Genentech, Inc.

\$10,000 – \$24,999

Acorda Therapeutics, Inc.
The Athwin Foundation
Charles L. Callander
Caring for Colorado Foundation
Hanna and Associates Inc.
Helen K. and Arthur E. Johnson
Foundation
John D. Cumming Family Foundation
Mellam Family Foundation
Novartis Pharmaceuticals Corp.
Owens-Illinois Fund
The Roy A. Hunt Foundation
Crissy and John Shipp
Stroock and Stroock and Lavan LLP
Ronald E. Tarrson
US Bank

\$5,000 – \$9,999

Alliance Beverage Distributing
Company LLC
Anonymous
Atlantis Casino Resort Spa
AXA Foundation
The Nathan B. and Florence R.
Burt Foundation
CellularOne
Daniel C. Chung

The Coca-Cola Bottlers Foundation
Colorado Footwear
The Consortium of Multiple
Sclerosis Centers
Country Club of the Rockies
Emerald Queen Hotel and Casinos
Patricia Frantz
Gibney, Anthony and Flaherty, LLP
Val and Bob Gwyn
Robin and Dick Kelly
Dorice and Corbin McNeill
National Multiple Sclerosis Society
Richard G. Neustedter
Betty and Chester B. Nichols
O'Connor Davies Munns and
Dobbins
Eugenia A Riordan Trust
Steve Shraiberg and Al Blum
Slifer Smith and Frampton Real
Estate
The Bank of New York / Mellon
Corporation
Kerry S. Watson

\$2,500 – \$4,999

Anonymous (2)
Karen and Scot Barker
Evalyn and Brock Byers
Creative Healthcare Solutions
Elaine and David Dana
Elizabeth and Gary DeSeelhorst
El Pomar Foundation
Fisher Communications, Inc.
Lara M. Gamel
Ginn-La Battle One Ltd., LLP
Alexandra and Philip Howard
IKEA Seattle/Elmhult LP
The Janus Foundation
John G. Duncan Charitable Trust
Martha L. and Scott D. Johnson
Richard H. Jones
Hank C. Kashiwa
Bernice Kuca
Michigan State University Federal
Credit Union
Janet and Robert Nakushian
Nancy O. Peyton
The Running Tide Foundation
Virgil Shutze
Andrew Stone
John Tlapek

Vail Valley Motorcycle Foundation
Wasatch Advisors Inc.

\$1,500 – \$2,499

Berman Family Foundation
Barbara A. and Howard J. Brinton
Canyon Fever, Inc.
Kathleen and Trent Cole
Katherine and Dillon DeMore
Sallie A. and Ray W. Edwards
Encore Beverage, LLC
Kimberly A. and Timothy J. Feehan
First Bank of Vail
Christopher Hallvik
Kristi Jones
Elizabeth Larock
Richard LaValley
David and Jared Madden
Masonic Foundation of Utah
Milstein Family Foundation
John O'Connor
Gini Patterson
Diane Rosselet and Martin Vitale
Cathy A. and Randall T. Schapiro
Robin and Tomas Stone
The Supercalifragilisticexpialidocious
Foundation
Rochelle and Ronald Tamkin
Theta Xi Fraternity
Beth and Randy Van Horn
Vin 48 Restaurant Wine Bar
Mel Wasserman
Jan and Buzz Wiesenfeld
Steve Wodlinger

\$1,000 – \$1,499

1992 Charitable Trust
John K. Alstrom
Gary I. Amendola
John P. McBride Family and the
ABC Foundation
Beaver Creek Resort Company
Annette and Douglas Bohannon
Ronald Boire
Martin Bouma
Patricia and William Cafray
Nancy and D. Peter Canty
Percilla and William Chappell
Citi Global Impact Funding Trust,
Inc

Bruce H. Cram
Martha Crocker
The Cumming Foundation
David C. Smith Family Fund
Susan De Felice
Fotene J. Demoulas
Richard DesVaux
Dix Corporation Contractors
Barbara and Fred Fielder
Stephen J. Francis
Lynn E. Friday
Gaddis Investments
Kevin Gagan
Beth and Robert Gardner
Anmarie Giddings
Glenwood Meadows LLC
Alan C. Greenberg
Christina Groll and Steve Villano
Benjamin Hammerschlag
Dale L. Hardy
The Housing Company
Torrence M. Hunt
Louise A. Hutchinson
Jennifer and Brian Hutchinson
Janco Partners, Inc.
Jensco Pipe and Equipment Inc.
Fay Johnson
JPK Management
Bruce Larson
Cynthia Lazetich
Lynda Leeper
Larry Leighton
Teresa and Donald Mayo
Patrick W. McLane
Diana D. and Peter R. Merriam
James R. Moffett
Mountain Temp Services
Christopher Mueller
Joyce L. Nelson
Nevermore, Inc.
Park City Mountain Resort
Peak Land Consultants
Joseph Perini Memorial
Foundation
Coleen M. Reardon and Bob
Wheaton
Ressler Chevrolet, Oldsmobile,
Toyota
Rivers to Peaks Real Estate
Sanders Foundation
Trudy and John Schafer
Kim and Kevin Sharkey

Gail Shields and Andrew Miller
 Elizabeth and Paul Shiverick
 The Jackson E. and Evelyn G.
 Spears Foundation
 Elizabeth A. Stone
 Jean L. and Donald Stone
 Katherine and Dennis Swanson
 Szaferman, Lakind, Blumstein and
 Blader, PC
 Toledo Molding and Die, Inc.
 United Jewish Federation
 Foundation
 Nancy Wickes
 Lara M. and Alexander Wohllaib
 Robert Wolff
 Perry Yockey Family Foundation
 Lara Zahaba

Roberta and Andrew Bowman
 Paula and Rick Boyles
 BP Foundation, Inc.
 Barbara Brady
 Harry Brakely
 Tupper Briggs
 Dort A. Cameron
 Alan Cannon
 Capt'n Ron's, LLC
 Gail C. and Lawrence S. Caruso
 William Chounet
 Clare Colletti
 Colorado Business Bank, N.A.
 Colorado Capital Bank
 Comerford Insurance Agency, Inc.
 Carol Conger and Dr. Richard Hicks
 The Cottage Realty, Ltd

Federal National Finance
 Corporation
 Fidelity Charitable Gift Fund
 Dorene Frost
 Helen and Robb Gair
 GE Foundation
 Gene Cook Real Estate
 Genentech Employee Matching
 Gift Program
 Beth E. Gibson
 Deborah Godfrey
 Golder Associates, Inc.
 Marc Goldfarb
 William A. Goyen
 Elizabeth and George Gumerman
 Jason D. Halio
 MaryAnn and Gregory Hand

Brooke Karr
 Mark and Valerie Kelly
 Patricia M. and James G. Kennedy
 King Engineering, Inc
 Joe R. Klutts
 Kobra International Ltd.
 Laurie and James Kohler
 Bradley T. Korb
 Paul LaLena
 John Robert Lazzareschi
 John Leclair
 Roger Lee
 Mary Lenling and Mark A. Shircel
 Brenda and George Lockie
 Lone Star Chapter: Austin CRS
 Paula and H. Montgomery Loud
 Barbara and John Madden

“The CAN DO program was the most comprehensive, interesting and enjoyable thing I’ve ever done regarding MS. In five days I learned more about MS in general and my case in particular than I had learned in the 25 years since my diagnosis.”

—Gail S.
 CAN DO program participant living with MS

\$500 – \$999

Clare Algeo
 Michael P. Altringer
 Anna and Brian Anderson
 Anlujo Capital Inc.
 Anonymous (2)
 Diane, Robin, Wren and Kim Aubry
 Avis and Nick Badami
 Bank of America
 Lisa A. and Scott H. Bare
 Laura and Steve Bateson
 Roger Bayston
 Bob Beattie
 Bellevue School District
 James Bergmann
 Stephanie and Frederick Bishop
 Family Foundation
 Carolyn J. and John H. Bliley
 Joseph Bodon
 Boeing Employees Credit Union
 Jill and Loren Bough

Ann Marie and John Cotton
 Bonnie G. and Christopher H.
 Covington
 Elaine and Doug Cram
 Jeff Craven
 Crystal Mountain
 D and B Realty Inc.
 Amy Dana and Joe Profaci
 Dave's World, Inc.
 Caren Deardorf
 Martha Dischinger
 Emily Dorazio
 Terrell R. Dory
 Connie A. and Jeffrey S.
 Drenker
 Durango Cyclery LLC
 Margaret and Gary Edwards
 Eliot Management Group
 Connie and Robert Erickson
 EWRT LLC

Dick Hauserman
 Robert Heir
 Jan Helen
 Gayle Henderson
 Heidi Hines
 Stephen Hodgkins
 Houston and Gorog Company
 Aubyn and Robert Howe
 Caryn and Richard Hunt
 Carole Huntsman
 The Industrial Company
 ING Financial Services Corporation
 Insurance Professionals, Inc.
 Dudley Irwin
 J and C Account
 Jack Fine Properties
 Jet Plumbing and Drain Services
 Jones and Stokes
 JP Morgan Private Banking
 Karl Cook Cattle Company

Madison Jaycees, Inc.
 Brian Maiocco
 Lorraine Mann
 Pam Marion
 Carole and Richard Martens
 Debra L. Matsuhiro
 Michael E. McGoldrick
 Beth McKinney
 Suzanne M. and Paul W. Meier
 Mark Meyer
 Mamie and Gary Mierzwak
 John Moore
 Christopher A. Morson
 Lynn P. Murphy
 Kathy and Doug Nalbert
 Sharif Nassar
 Eric Mankowski
 New Belgium Brewing Co, Inc.
 New Hope Missionary Baptist
 Church

Fred W. Nowland
Edward D. O'Brien
Holly Ong
Orlando Puga Enterprises
Frala and Aaron Osherow
Dorothy and John A. Owens
Philadelphia Insurance
Companies
Pinnacol Assurance
Ron F. Plummer
James H. Prince
Prudential California Realty
Puget Sound Energy
Razors Edge Inc.
Michael Reid
Charlie Rezba-Kumashiro
Meredith Rice-Stone
Darren Rich
Joshua M. Richter
Julie and Patrick Riordan
Clifford Rodrigue
Barbara S. and Charles B.
Roehrig
John F. Rowan
SAS Management, Inc.
Scott Green Excavating, Inc.
Ralph Scurfield
Judy M. and Jack R. Secord
Peggy and William Shaw
James B. Sikking
Ski Town USA Lions Club, Inc.
Laurin and Paul Sleeth
Sno-Engineering, Inc.
Sinthia G. and Michael J. Sonnier
Christine and James E. Speaker
Terri and Dan Stewart
Stuth Company, Inc.
Paul Sugiyama
Jeffrey Sussman
Targa Tours, Inc.
Wilson B. Tarver
Christine Tatom Davis
Julia F. and Michael D. Terrill
Karen Terzian
Karen and Roy Theriot
Michael S. Thomas
Jeff Tindall
Jorge A. Torrella
Transition Consulting, LLC
Transportation and Consolidation
Pam and Steven Truss
Hollis L. and Gary L. Tuininga
John S. Tuschman
United Way of Central New Mexico
Janelle and Willem Van Der Werf
Heidi Voelker
Les Walden
Sara Warren
Mary E. and James T. Welte
Scott Wemple
Stephen Westmark
Stanley Whitmore
Jennifer M. and Thomas H.
Wickes

Karen and Robert Wilhelm
Lisa and Pete Williams
Glenda Williamson
Karen Willison
Jesse Wolf II
Linda and Dale P. Wolfe
Marcy F. and Richard H.B.
Woodrow
Laura Worrall
Greg Zorman

\$100 – \$499

4-K Partnership
Kathleen A. Abbott
Jacob Abbott
Nathan M. Abbott
Terry Adami
Jennifer and Neil D. Adams
Wendy and Andrew Adamson
Eric Adolphi
Chris and John Adolphi
Advanced Copier Solutions
Judith Aiello and Maurice Fantus
Catherine D. and Walter S.
Ainsworth
Tstrim Alione
James Allan
Dinecha and Albert Allegue
Eileen and Lon S. Allen
Ivor Allsop
Mary Allsop
Kimberly and Len Almalech
Alpine Heating and Sheet Metal,
Inc.
Alpine Medical Group, LLC
Fredda Lynn and Mark C.
Alston
Richard Altman

Sandra K. and William E.
Altringer
Chris Amoroso
Susan L. Anacker and James
Johnson
Patty Ancona
Ann Marie Anderson
Donald Anderson
Katherine Anderson
Ruth and Eric Anderson
Sharon Anderson
Michelle Angelides
Dino and Adrienne Anecchini
Anonymous (5)
James A. Anzalone
Aquamarine Dock Builders
Arizona Snowbowl Resort
Kara and Nick Armano
Judith Arnett-Green and
Charles M. Green
Vincent Arroyo
Deborah and Jeffrey Astroth
Carol H. and Russell E. Atha
Claudia Ault
Avenues of the World Travel
Michelle Avery
Avon Rubber and Plastics, Inc.
Betty Baca and Mike Paine
Geraldine and Jack Baer
Abraham Baeza
Jessi Bailey
Kelli Bailey
Barbara Ann and Stewart Baily
Christina and George Baker
Melissa Baker
James Baldes
Bob Baldwin
Debora and Mark Baldwin
Amy H. and Bradley G. Ball

Cindi and Mark Ball
Susan M. Ball
Nanette T. and Gary J.
Barnesberger
Sharyl Bancroft
Sherry Barber
Barclays Global Investors
Matching
Susan M. and Charles B. Barker
Janice A. Barlow
Veda C. and Kyle E. Barner
Janet Barnes
Emie Barnes
Bryan Barnes
Jennifer V. Barrientos
Basye and Courtney Investments
Anita Bauer
Katie Baum
Patti and Charles Baum
Patricia Baum
Todd Baumgartner
Janice Baxter
Bjorn Bayley
Dana Beard
Brad Becker
Jenna Beh
Morris Bell
Bruce Bell
Nadine Belovarac
John Bendall
Nikki Bennett
Mary Lou Bennett
William H. Bentley
Tamara Berezna
Ramona and Thomas S. Berger
Susan and Maurice Bergeron
Michael Bernard
Laura Bernard
Ritt Berry



Berry and Company Public
Relations, LLC
Jen Bianchi
Patricia and Curtis Bianchi
Charles Biderman
Big Sky Properties, Inc.
Big Sky Western Bank
Big Sky Woodwork and Design,
Inc.

Kay Bird
Ann and Denny Bishop
Blacksmith, Inc.
James G. Blaine
Patricia G. Blazewich
Priscilla Blevins

Andrew Blight

Krystal Block

Scott Bloom

Blue Ribbon Builders, Inc.

Maxine and Sanford Blumenfeld

Jim Bodin

Amy and Joshua Boger

Barbara and Kirk Bohannon

Marietta and Stefan Bohn

Gerald J. Bolick

Patrice Bonfield

Cathy Bonnici

Johnny Borda

Norman H. Bouton

Mary Bowman

Barbara and John Bowman

Mildred Bowman

Tressa and Lowell Bowman

Miriam Boyajian

Tania and Steve Boyd

David and Martha Boyles

Patricia Boysen

Bozeman Daily Chronicle

Nancy Braam

Brackin Ranches

Rose M. Braden

Jason Braidwood

Eleanor and Gus Bramante

Keri J. Brandt

Rita and Joerg Braun

Barbara Brazes

Marion L. and Heinz H. Brennwald

Lynn E. and Kevin L. Brewster

Joan Breznikar

Janice R. and Robert E. Brickey

Monika and Todd Brickson

Darrell Briggs

Nathan Clark Brinton

Nancy Bronstein Gisko

Carol and Joel Bronz

Cynthia Brooks

Elizabeth G. and Scott S. Brostoff

Bart B. Brown

Christine and Thomas Brown

Gayle V. and Paul M. Brown

Michael Brown

Susan Brown

Susan E. and Frank A. Brown

Tim Brown

Travis Brown

Georgia Brown

Judy C. Brown-Perry

Ellen Brownstein

Deborah and William Brubaker

Sandra Bruce

Gwendolyn Brunner

Laurie and Frank Bruns

Penny and Jerry Bumgarner

J. Bert Bunnell

Heather Burke

Amanda and Jeff Burton

The Buppenwieser Foundation

JoAnn and Joseph Callaway

Paula and Brian Canepa

Camas Development Corporation

Susan and Roger Camp

Gail and F. Duncan Campbell

Susan Campbell and John

McKinney

Patrick Cantwell

Elizabeth Carey

James W. Carney

Timothy Carr

Robert A. Case

Caseco Associates Inc.

Wayne Caskey

Steve Cass

Laura Cass

CB Lodging

Central Insurance Agency

Katherine Chalmers

Louise Ray and Lewis P. Chapman

Chapman Dental Lab

Karen L. Chapman, MD, PA

Kara M. and Gerald J. Charnholm

Angela Chiarelli and Michael

Compagna

Diane Childress

Christine Chisholm and Robert and

Hugh Tures

Ann Christiansen

Valerie and William Christoph

Civil Design Consultants, Inc.

Dale Clark

Linda Clark

Richard Clark

Paul Clavadetscher

Catherine C. and Robert C. Cliff

Francis Clifford

John M. Clikeman

Richard G. Cline

Clovis Shopping Center

Kellye and Michael Cofer

Danielle and Dave Coleman

Chip Collins

Colorado River Center Inc.

Columbia State Bank

Columbia Tractor Inc.

Ted Compton

Anne-Marie and Dennis Conboy

Judith and Joe Connell

Patrick J. Connolly

James Considine

Contec

James Cook

Emily and Karl Cook

W. Bruce and Mary Louise Cook

Foundation

Carla Coonradt

Ena K. Cooper

Stacey L. and Brian L. Cooper

Nigel Cooper

Christin Cooper and Mark Tacha

Leslie Cooté

Sander Coovert

Corbond Corp. Performance

Insulation System

J. Zachary Corkin

Suzanne Corkin

Cornerstone Management Services

Lila and Jack Corrock

Cosmopolitan Engineering Group,

Inc.

Margaret P. Cost

Kathryn Costanti

John Coundouris

Amy Courchesne

Claudia Courtney-Nordquest and

Robert Nordquest

Daniel Covill

Jeff Cracolice

Laura and Timothy Crandall

Dorothy T. and Jeffrey Craven

Carolyn E. and Charles E. Crawford

Shirley A. and George B. Creighton

Martha P. Crocker

Jeanne Crockett

Claire Kathleen and David Croll

Debbie L. and John H. Crowther

Lynne Crowther

Sarah J. and Douglas H. Crowther

Seth Crozier

Peggy Ann and Loy Dale Cruse

Barbara D. Cumming

Allison R. and David E. Cumming

Kristi and John D. Cumming

Lynne D. Cummings and Reed

Little

Mary Allis Curran

Kathleen and David Curtin

James Czajkowski

Jill Czapla

The D and B Foundation

D.E.S. Inc.

Deirdra and Tom Da Silva

da Silva Family Trust

Dacco Sales and Service Ltd.

Susan M. and Paul J. Daigle

Richard Dalessio

Aaron Dallas

Gregory Dalzell

Glen L. Dame

Tracy and Will Daniels

Ruth Danzeisen

Marcus Davi

David A. Lindahl and Associates

Deanna Davis

Tyler Davis-Jeffers

Michelle and E. Frederick

Davison

DB and CO., LLC

Christopher De Felice

Michael De Felice

Wes Dearborn

“The CAN DO program was a life-changing event for me. It has given me so much hope for a healthier life.”

—Patricia H.

CAN DO program participant living with MS

Deedee Decker
Janet and Richard DeClark
Joseph Defanti
Amber Deherrera
Carrie and Mike Delain
Ross Delaplaine
Edward Delava
Karen DeLorenzo
John Demarsh
Michelle and Herwig Demschar
Fara S. and Jason Denhart
Dependable Paint and Drywall,
Inc.
Doug Desenberg
Desert Mountain Tile, Inc.
Design Performance Electronics,
Inc.
Maureen and Daniel Devereaux
Leslie C. and Mark M. Dewald
Tina Dewitt
Doris Dewton and Richard Gretz
Diana L. and Robert W. Dibblee
David P. Dibblee
Donald Dickerson
Kirk R. Dige
Shannon and David Dillard
Sue Dillinger

Peter Duncan
Marilyn and Paul R. Duncan
Irma Duncan
Mary E. and David L. Duncan
John Dunlap
Diane Durham
Patricia Dutra
Claudia and Howard Duvall
Dyerbilt Construction Inc.
Eagle-Vail Metropolitan District
Harriet A. and Walter W. Earley
David Eastman
Eastpark Associates
Eastside Consultants, Inc.
Jeanette and Michael Edmonson
Leslie Edwards
Edwards Building Center
Adam and Jennifer K.S. Eichberg
Eichhorn
Matthew Eldredge
Steve Elgar
Ron and Nancy P. Ellickson
Judy Elliott
Elliott Bay Marina Inc.
Jeffrey T. Ellis
Chip Emmerich and Ollie Buckley
Empire Cold Storage and Frosty

Tammy Fadler
Nick Fagerness
Erik Fallenius
Christine and Bill M. Fanning
Carol Fara
Gregory Farmer
Rodney R. Farris
Karen Farugia
Diane E. Faxon and R. Linwood
Fedewa Custom Works, Inc.
Andrew N. Fenton
Dallas Ferguson
Andrew Ferguson
Charlene E. and Steve J. Ferkovich
Marianne and Jack Ferraro
Harve A. Ferrill
Kimberly and David Ferris
Anne S. and Eric G. Fifer
Ryan Finney
Finney Land Co.
Jake Firkins
M.W. and R.C. Fischer
Katharine Fish
Jackie and Keith Fisher
Geneve E. and James Fitch
Pamela and Robert Fitting
Julianne and John Fitzthum

Tamara Franklin and Robert R.
Roman
Nancy and Gregory Franklin
Edward Fredricks
Jennifer L. and David J. Freeburg
Scott Freeman
Liz and Don Freeman
Harrison French
Linda and John French
Judith J. and Douglas W. Frerichs
Jillian Friedman
F. Charles Froelicher
From the Heart
Kevin Fryer
Thomas D. Fulton and Shawn M.
Hertz
Jane and David Funke
Margaret Klein Galland
Gallatin Valley Furniture
Stanley F. Slater and Paula J.
Galloway
Catherine C. and William E.
Galvin
Neil Ganz
George P. Garmany
Garrett and Associates, Inc.
Sande Garton

*Common symptoms of MS include fatigue, weakness,
balance problems, numbness and vision loss.*

Robert Dinapoli
Rhonda Dix
Greg Dixon
Klara Doert
Penny L. and Charles F.
Donelan
Patricia Dorazio
Lisa D'Orazio
Susan D'Orazio
Stephen Dorsett
Yvonne E. Dory
Samir Doshi
Mary Ann and John Dowling
Kristen B. and Daniel H. Downs
Leon A. Driss
Denise Duca
Brian Duffy
Randy Dunbar

Ice
Emporador Homes LLC
Keith A. Engelke
Engineering Designworks, Inc.
Dave Engstrom
Jerome A Erickson
Deb and Justin Erickson
Richard and Marilyn Erratt
Tamie and Bruce Erratt
Dixie R. Estes
Melinda Estridge
John Evans
Suzanne Evans
Evo Design LLC
Donna and William Ewers
Thomas Ewing
Heather Ewing
Fabiano Brothers, Inc.

Michael Flakus
Jim Flaum
Zachary Fleet
Sarah L. and Thomas R. Flint
Jim Foley
Matthew Follett
Marlene D. and John R. Fontana
K.A. and T.B. Foote
Cheryl and John Ford
Ford Do All
Julie and Chris Fortin
Four Corners Hardware
Four Seasons Landscape
Maintenance, Inc
Cynthia Fowler and Nathan
Anderson
Barbara and Ronald Fraboni
Tracy Frankel

Bill and Melinda Gates
Foundation
Susan E. and Mark G. Gatley
Matt Gavin
Paula and Blair Gay
Gee Dunsten Seminars
Diane Q. and Waldo F. Geiger
Timothy Geiss
Linda and Edward Geiss
Pat Geiss
Georgette Geller-Petro
Kathy and Steve Gendler
Martha and H. Peyton Gentry
Colleen and Thomas D. George
Nancy L. and Donald D.
George
George Shaeffer Construction
Company

Patrick M. Gerrity
 Rajat Ghosh
 Gregory G. Gilbertson
 Lisa and Marshall Gilinsky
 Steve Gillis
 Daniel Gilmore
 Martha S. and James A. Gingrich
 Patrice Giordano and Bruce Bourne
 Louis and Michael Givens
 Nancy Gleason
 Stephen Glover
 Goff Engineering and Surveying
 Travis Goff
 Andrea Gogolos
 Ann L. and Smith Ely Goldsmith
 Sandra Goodall
 Sheryl and Jon Goodman
 Terri Goodman and Robert A. Hintermeister
 Nick Gould
 Diana Graham
 Andree Graham
 Kevin Grambush
 Matthew Gray
 Cindy Gray
 Greater Gallatin Contractors LLP
 Greenwater Skis
 Tony Gregory

Shirley Gregory
 Leif Grevle
 Ruth A. Groebner
 Donald J. Grossman
 Jan and Henry Gruver
 Susan Gudmundson
 Lauren Guidos
 Darcy and Mark Gulig
 Sheila J. and George J. Gumerman
 Marianne Gurule-Hardy
 H.B.I. Ranch
 Galand Haas
 Mary and Jim Hagen
 Julie and Kris Hagenbuch
 Nancy Haggart
 Barry L. Haley
 Lisa Hall-Grigsby and James A. Grisby
 Shirley and Marc Halvorsen
 Anderson Hambricht
 John Hamilton
 Loretta and Gary Hammerslag
 Maureen and Curt Hammond
 Henry Hancock
 Karen Hanks
 Nancy and Edward Hannibal
 Laura L. Hanson
 Lisa and P. Michael Hanson
 John Hanson

Juliann Hanson-Zlatev
 Charles Harder
 Mary Harker
 Jill and Stephen Harkins
 Andreas Harlow
 Catherine T. Harney
 Harold J. Barrett Company Inc.
 Patricia and John Harris
 Muriel M. and Hugh W. Harris
 Gail Hartley
 Craig Hartranft
 Jill and John Harty
 Chester Harvey
 Wendy and Brian Harvey
 Lesley Harwood
 Mark Kay Hausladen Foley and Gregory Foley
 Anita and Robert Hawkins
 Anne and Andrew Hay
 Carol and Gene Haynes
 Kim and Woody Hebenstreit
 Rik Heid
 Heidi Gatch Real Estate, Inc.
 Patricia A. Heller
 Hemmings and Jarrett
 Martha Hendrick
 Christina and Matt Hengehold
 Alison and Jim Hengehold
 Priscilla G. Henkelmann
 F. Henkin
 Henning, Schwarzkopf and Co.
 Terry Henslee
 Cari and Mark Hermacinski
 Linda J. and Lloyd A. Herman
 Virginia M. and Gary D. Hermann
 Jeffrey Hiatt
 Pat Hiban
 Patrick Hickey
 Amanda Hicks
 Kelly and Merrick Hidalgo
 Lisa M. and Timothy A. Higgins
 Laura D. and Robert J. Higgins
 High 5 Design
 Highline Partners, Ltd.
 Michael R. Hillstrand
 Ronald L. Hillstrand
 Marilyn Hillstrand
 Beth Hines and William O'Neill
 David C. Hoff
 Donald Hoke
 Alyson and Martin Holberg
 Ed Holdsworth
 Margot and Stephen Holland
 Sheri Lynne Holmberg
 Christopher Holze
 Home Planning and Design, LTD
 Kevin Hood
 Jennifer L. and Koy M. Hoover
 Chevis Horne
 Rosemary L. Horner
 Judith Kratze Horowitz
 HotSpring Spas and Fitness, Inc

Todd Michael House
 Mimi and Nathaniel Howe
 Diane and Terry Howe
 Nathaniel S. Howe
 Jo Anne Hudson
 Bert Huelmann
 Barbara S. and William S. Hughes
 Lori and Tom Huling
 Melissa and Matthew Hurley
 Terry Owens Hurt
 Vivian A. Huskinson
 Tiffani R. and David M. Hyde
 Mario Iacobelli
 Julie and Pete Iacobelli
 Rosalind L. Ibrahim
 Impact Drafting and Design Inc.
 Anthony A. Incerto
 Industrial Magnetics, Inc.
 Interiors with Altitude, LLC
 Tom Isaacson
 Isbell Construction Inc.
 Leslie and Steve Isom
 Dana Ivers
 Patricia and Michael Ivy
 J Parks Real Estate
 Gerald Jackson
 Carmen V. and Paul T. Jackson
 Todd Jacobus
 Suzanne and Jake Jacoby
 James Oil Company, Inc.
 Brandon Jeffrey
 David R. Jensen
 Teresa Jeter
 Jimerfield Homes Ltd.
 JK Wall Designers
 John Smith Real Estate Group
 Judy Johns
 Faith S. Johnson and Gloria Clauson
 Amy Johnson
 Roger Johnson
 Karina Johnson
 Robert Jones
 Sandra and Frederick Jones
 J. Chad Jones
 John Jones
 Jessenia Jones
 JT Builders Inc.
 Nancy Juday and John E. Popovich
 Joel Jurkens
 K and L Beverage Company LLC
 Carli and Rudis Kadzejs
 Kaegebein Fine Homebuilding
 Karen K. and Joshua P. Kagan
 Dan Kahl
 Kaiser Permanente
 Rosalind Kalb
 Diane L.R. and Andrew B. Kane
 Steven Kangisser
 Kappa Alpha Theta Westchester
 Robert M. Karr
 John E. Kassay



Kassbohrer All Terrain Vehicles, Inc.
 Karen Kee
 Lois and Matt Kehoe
 Susan and Malvin Keller
 Marcia D. and Philip J. Kelley
 Mary B. Kelley
 Cheri L. Kellie
 Alicia and Michael Kelly
 Craig Kelly
 Moira Kelly
 Angela Kencairn
 Sparky Kennedy
 Mary and Kirk Kennedy
 Kent Interiors
 Britanie and James Kessler
 David Keyes
 Susan Keyes and James R. Sulat
 Billy Kidd
 Latherine Kiefer
 Nora E. Kilpatrick and Harold B. Reckinger
 Janice Kim and Seichiro Suzuki
 Kimberly Kin and Orion E. Poplawski
 Kinderslee Management Group, Inc.
 Corey and Rich Kingsborough
 Leah Kinney and Jeremy Schapiro
 Sandi and Skip Kinsley
 Shane Kite
 John A. Kizer
 Gillean M. and Carl R. Kjeldsberg
 Vasile Klaassen
 Shemaya Klar
 Daniel F. Klein
 Kleinfelder West Inc
 C.E. Klinker
 Jean Kluk
 KMAC Enterprises, Inc.
 Knobby Ridge Builders
 Ethan Knowlden
 Chuck Knowlton
 Bruce Knowlton
 Kraig Knudsen
 David Knuth
 Herbert Ko
 Hanna Koburov
 Jude M. Koenig
 Kenneth Kolano
 Kollmann Welding Inc.
 Pak S. Koong
 Steven Kopach
 Joanne and John Kos
 Gregory Kraff
 William E. Kring
 Phillip Kumin
 Lily and Jan Kunczynski
 Alma M. Kurtz
 Albert J. and Erna G. Kurtzon
 Susan Kuzenski and Roy Fern
 L. Labranche

Andy Laird
 Ryan Lamberg
 Landau Associates, Inc.
 Lane Custom Framing Ltd.
 Kit Lane and Robert L. Wyly
 Gary Langford
 Barbara and Chiswell D. Langhorne
 Marcia and Stephen Lareau
 Emily and Craig Large
 Kenneth Larsen
 Mark Lathrop
 Leslie and Michael Laverghetta
 John Lawrence
 J.M. Lawrence
 Susan H. and David T. Lawrence
 Jill and Norman Lawson
 Amy Lebold
 Carolyn Lee
 Helen and Lynden Lee
 Nancy and Chilton Lee
 Leffler Construction
 Katherine and Patrick Leggett
 Michelle Leighton
 Harry Leland
 Theresa and Daniel Lennert
 June and Ken Lennox
 Joseph R. Leonard
 M. and R. Leonard
 Leroy Enterprises, LLC
 Jeanette A. and Jane E. Letourneau
 Suzanne and Tom Letourneau
 Joe Letourneau
 Julie Levin
 Stanford I. Levy
 Greg Lewis
 John Lewis
 Timothy Ligibel
 Linda Liman

James C. Linville
 Jan Palmer Lipcon
 Therese and Paul Lisowski
 Julia K. and Daniel F. Little
 Lone Peak Realty, Inc.
 Lone Pine Builders, Inc.
 Ivan Lopez
 Dale Lord
 Michele Loughead
 Teresa Loving
 Donald Luby
 Lucas Trust Ventures
 Thor Lude
 Sandra and Jurgen Ludwig
 Kendal Lukrich
 Jason Lum
 Susan Lyles
 Patty and Greg Lyman
 Virginia Carol Lyman
 Shelley Lyons
 Thomas Lyons
 M.R. Hummers, Inc.
 Jeff MacDonald
 Joy and Mark Maciejewski
 Michelle and Mark Mackey
 David P. Macy
 Bonnie and Jim Madderom
 Madeen Interior Design, ASID
 Robert Madison
 Angela and Eugene Mahoney
 Jo Ann and Robert Majka
 Jo Anne and Richard Malmgren
 Katherine Malone
 Management Innovations Inc.
 Shannon Mannix
 Shannon M. Mansfield
 Mansfield Warehouse and Office Park
 Paul Maranger
 John F. Marchesseault, Jr.

Jordan K. Margid
 Sheila and Don Marmion
 Shelly and Mike Marolt
 Abby and Jon Marozick
 Karen Marriott
 Douglas Marrone
 Diane Marsh
 Kathryn and Alex Martin
 Angela Theresa Martinez
 Nathan C. Martinez
 Hunter Marvel
 Mia D. and Mark Marvelli
 Rita Mascari
 Theresa M. and Michael J. Mascari
 Augie and Chris Mascari
 Pam Mason
 Linda and John Massopust
 Mike Mastrianni
 Trudy and Robert Matarese
 Gary Matthews
 Ralph E. Mayerstein
 Jennifer and Paul Mayheue
 Gloria McBride
 Jeff McCabe
 Carol and Marcella McCaffray
 Christine and Dustin McCann
 Claire McCarney
 Carroll McCarthy
 Marilyn and Mark McCaulley
 James McDonald
 Monica McDonald Hearn and R. Anthony Hearn
 Leslie McDonnell
 Sean H. McEnroe
 Matt McFee
 Shannon and David McGahren
 Patsy McGaughy and Jack Marx
 Patricia McGluney

“It was awesome to be surrounded for five days by such knowledgeable and caring professionals and sharing participants. There is no doubt in our minds the CAN DO program offered hope for a future living with MS. We thank you from the bottom of our hearts.”

—Michele Z.

CAN DO program participant living with MS

—Steve Z.

CAN DO program participant, support partner

Gail McGovern
 Ann and Thomas McGrath
 Katherine McKay
 Catherine McKinney
 Tamara McKinney
 Jim McKissack
 Michael McLacher
 Cindy McLean
 Alex Mclean
 Jon McNeal
 Marie McNeil
 Patricia and Mark Mead
 Judith Mealey
 Linda Melin
 Irene Mercer
 Scott Mercer
 Rita and Larry Merkel
 Raymond P. Merry
 Kristin Mettler
 Timothy J. Metz
 David Meyer
 Judith Meyer
 Benjamin Miller
 Greg Miller
 Janice Miller
 Jerry W. Miller
 Michael Miller
 Michael W. Miller
 Sandy and Keith Miller
 Scott Miller
 Sue Miller
 H S Mills
 Mary and Henry Milner
 Gary Milstein
 Robert Mintz
 Mirr Inc.
 Nicole Misfeldt
 Barbara and Jeffrey Mishell
 Grace Mitchell
 Dale Mitchell
 Michael Mitravich
 Grover Moberley
 Ronald Molles
 Rebekah and Stephen Molloy
 Montana Land Group LLC
 Carol L. and Larry P. Moore
 Gordon and Betty Moore
 Foundation
 Jason Moore
 Karen Moore
 Lori Moore
 Roland Mora
 Edward Mora
 Mitch Moreman
 Jonathan Morse
 Charles H. Moss
 Thomas A. Mott
 Diane M. and Scott G. Moulton
 Mountain Digital, LLC
 Mountain Hot Tub, Inc.
 Mountain Paint and Supplies,
 Inc.
 Mountain Parent Magazine
 Mountain Sun Properties LLC



Mountain West Bank, N.A.
 Shannon Moynihan
 Patricia P. Mueller
 John F. Mueller
 Lynn and James Mullen
 John Mulligan
 Leigh Ann and Scott Mullinix
 Gunther Munch
 Amy and Mitchell Murphy
 Blake Murphy
 Patrick Murphy
 Brad Murphy
 Suzanne and Thomas Murphy
 Heather M. Murray and Gloria G.
 Bruno
 Kathleen Murray
 Rosalie K. and James T. Mushta
 Jeff Myer
 Timothy Myers
 David Narajowski
 Sean-Xavier Neath and Ryan
 Sharkey
 Martha and R.P. Neely
 Cheryl A. Nellis
 Brenda L. and Jeff S. Nelson
 Terri and Russell Nelson
 Jonathan Nelson
 Matthew Newborn
 Linda B. Newcomb-Mathis and
 Mark R. Mathis
 Rita E. Newman
 Don Nichols
 Jim Nichols
 Cindra and John Nicholson
 Sandra Nickel
 Ron Niederer
 Simone and Brent Nixon
 Noelle Nixon
 Eleanor and Patrick D. Nolan
 Patricia Nolen

Gayle and David Nolte
 Norampac Industries, Inc.
 Craig Norberg
 Norm Druffel and Sons
 Debra and David Norris
 Greg Norton
 Carol P. Norton
 Margie Norton
 Sue and Robert I. Novasel
 Nu Chem
 Elizabeth and Christopher
 O'Brien
 Steve O'Brien
 Diane O'Connor
 Betty O'Grady Hillstrand and
 Wally Hillstrand
 Kimberly Oberhauser
 Catherine Ohl and Gene
 Fulkerson
 Oil Stop
 Carol Ann O'Keefe
 Sharon C. and John F. Oldfield
 Blanca O'Leary and J.
 Cavanaugh
 Olivia's Home Accessories
 Karen and Chad Olivier
 Alex Olsen
 Betty F. Olsen
 Cheryl Olsen
 Christian F. Olsen
 David E. Olsen
 Marilyn and Thomas Olsen
 Eric Olson
 Martha and Timothy Olson
 Toni and Jeff Olson
 Jill and Michael O'Meara
 Sandra and Carlos Ongkiko
 Derek O'Quinn
 Jane Orans
 Annibale Orsi

Kathleen and David Osborn
 Katherine M. Osten
 Overby Art Holdings LLC
 Jeff Packman
 Jim Padjen
 Palmer Enterprises
 Panhandle State Bank
 John Pankratz
 Paragon Technology Group,
 LLC
 Laura and Michael Parker
 Mike Parker
 Eileen Parker
 Pam Parker
 Michelle and Michael Parra
 Peg Pashkow
 Mark Patell
 Jan Patrick
 Patriot Fire Protection
 Jay Patterson
 Elaine and Philip Paul
 Pazzo's Inc./Pazzo's Wow Inc.
 Peak Mechanical Service, Inc.
 Glen E. Pearson
 Marion and Wallace Pearson
 Laura Pease
 Dale N. Peatman, CLU, CFP
 John Pecor
 Katherine and Bernhardt
 Pederson
 Carolyn A. Pedone and John
 W. Rose
 Lucy L. Pedulla
 Sharon and Gary Pelton
 Jonathan Peris
 Mary S. Perkins and Frank
 Doherty
 Ann and James M. Perry
 Cynthia Perry
 Philip Perskie

Jennifer Peters
Adam Peters
Karen F. and Leon Peterson
Mary E. and Frank A. Petitti
Laura Petty
Ross S. Pfohl
James Phelps
Linda and Kenneth Phelps
William Phelps
Nancy Pickrel
Kathy Pietro
Danny Pinegar
Pinnacle Land Services Inc.
Ann Piper
Lois K. and Gerald D. Piper
Margaret Piveronas
Play It Again Sports
The Playboy Foundation
Julia Pollock
Glenn J. Poulter
Power Graphics, Inc.
Jennifer Powers
Joan Pratt
Chuck Price
Mary Lynne and David C.
Price
Kathryn Pritchard
Prudential Steamboat Realty
Catherine and Richard Puccio
Anne-Marie and Paul Queally
Gretchen and William
Quigley
Robert Quinn
Cora and Robert Raich
Raider Ridge Cafe Inc
Tom Randall
Kathleen and Richard Ranft
Martha and Christopher Raser
Nancy and Steven Rasmussen
Jim Ratterman
Britt Raubenheimer
Kim and Arthur Rausch
Gayle and Gary Ray
James Record
Red Scarf Shots
Cale Redpath
C. Connie Reed
Debra L. Rees and David T.
English, MD
Michael Reese
Carol and Peter Refakis
Jarrod Regan
Paula Reif Headbloom
Becky and Craig Reininger
Resort Ventures West, Inc.
Resource Engineering Inc.
RH2 Engineering, Inc.
Timothy Rhoads
Grant D. Richards
Joanne and Chris Richardson
Ida J. and Josef Richter
Amy Richter
Duaine and Judy Rieker
Charlotte Riggs

Lisa Riley
Ivan Rimar
Dawn Ristow
Thomas Ritchie
River Rock Investments, LLC
Beth and Irwin Robbins
Joe Patrick Robbins, AIA
Jan and René Robert
Joyce M. and William E. Roberts
Stan Robertson
Matthew J. Robey
Michael Robinson
Rick Robinson
Rocky Mountain Bank
Rocky Mountain Reprographics,
Inc.
Jane Rodbell
Dianne M. and Robert W.
Rodenbeck
W. Gregory Rodiger
Tammy G. and Troy D. Roehrs
Donald K. Rogers
Joann and Vincent Roith
Patti and Rusty Rolfe
Peter Romwall
Gary A. Roney
Katherine and John Rooney
Darlene H. and James W. Root
Jenifer H. and Brian Root
Mary and Richard Rose
Hilary Rosen
Roy Ross
Anthony Rosso
Marilyn and Robert Rothring
Rick Rowland
Maryann P. Rowley
Cayce and Lauren Roy
Annette Royle
Erica Rubenstein

Charlotte Rubinstein and
Michael E. Salvatti
Rebecca Ruck
Catherine Rudiger
Jeanne K. and Carl Rudiger, Jr.
Victor Rudolf
Robert W. Rule
John D. Rule
Barbara B. Rupp
Cathy Russell
Kelly and Benjamin Russell
Russell's Auto Salon
Ronald C. Russo
Joan F. Rutledge
Cynthia Saer
Hazem Said
Saint John Lutheran Church
Joshua Sajtar
Steven Saltiel
San Juan Ski Company
Barbara M. and William S.
Sanders
Sandpoint Marine and Motor
Sport
Aloka and Trevor Sands
Dave Sarych
Linda G. and Richard P.
Saslow
Jean Saubert
Elizabeth and Justin Sautter
William Sawyer
Anthony Sbraga
Carolyn M. Scalabrino
Greg Schackel
Ruth M. and Ernest M.
Schaefer
Laurel and James Schaffer
Kristin and Jamie Schapiro
Maureen and Leslie Schapiro

Arthur Scharff
Robert Scheuneman
Fern and Harold Schiff
Anne and Ryan Schlenker
Sheila Schlesinger
Dotty Schloss
Judy and Chuck Schmid
George Schmid
Karen and Bob Schmidt
Dianna and David Schoderbek
Florence E. Schooff and Joanne
H. Easton
Kari and Benjamin Schultz
Karen and Elbert Schumm
Elizabeth and Richard Schwab
David W. Schwalbe
John Schwan
Margaret D. and Roger E.
Schwer
Jeff Scislow
Peter Scoville
Sara and Thor Seaborg
Mary Searcy
Catherine Sebastian
Security Title Company
Thomas Sedgwick
Joanne See
Eugene Seelbach
Sandy and Bob Seigel
Sharon and Frank Sell
David R. Sexton
Diane and Deck Shaline
Marc Shapiro
Maureen and Leslie Shapiro
Jan and Gary Sharp
Edward A. Shattuck
Anthony Shawe
Pat Shea
Linda Sheean

“At the CAN DO program I learned how to better balance the physical, intellectual, emotional, and spiritual dimensions for my MS. I feel more connected and a greater sense of control. Thank you for giving me the opportunity to participate in this program which has promoted health, and created hope in my life.”

—Michele K.
CAN DO program participant living with MS



Donald Sheffel
 Sharon P. Sheremeta
 Scott Sherman
 Rodney Shine
 Sierra Stone Fabrication, Inc.
 Ryan Siggins
 Andrea Selzer Silverman
 Cindy and Andrew Silverman
 Dottie Simper
 Simply Radiant Heating
 Simpson Honda
 Charles E. Sims
 Eric and Gayle Sims
 Katherine Sinton
 Skating Club of Vail
 Ski Country Kitchens
 Bradbury A. Skidmore
 Rina G. Slade and Kenneth
 Levine
 Ira Slagter
 Laurie Slaughter
 Marvin Sleeper
 Gary R. Smalley
 Jessica Smith
 Larry Smith
 Lee Smith
 Pam Solomon
 Sol-Tek Contractors
 Susan Soong
 Tami K. Spaulding
 Elaine Spear

James Spears
 Amy and Patrick Spellman
 Susan H. Spence
 Travis Spillman
 Diane and Adelbert Spitzer
 Lara Sprinkles
 Carrie Springer
 Thomas St. John, MD
 Michelle M. and Douglas R.
 Stafford
 Stahly Engineering and
 Associates
 Sharon and Arnold Staloff
 Steamboat Architectural
 Associates
 Steamboat Springs Real Estate
 Julie and Ronald Steele
 Ellen Stein
 Judy and Joseph Stein
 Diane Steiner
 Harriet Stephenson
 Steve Green Company, Inc.
 Laura Stevens
 Toby Stewart
 Chuck Stewart
 Janelle Stewart
 Robert Stewart
 Lisa Stifleman and Barry
 Arons
 Christine and John Stockwell
 Ronald Stone

Suzanne Stone
 Stor A Ski Crystal Mountain,
 Inc.
 JoAnn and Ray Story
 Gregory A. Stoskopf
 Diane Stow
 Strachan Strachan and Simon,
 PC
 Stephanie and Duane Stranahan
 Catherine J. Strand
 Strear Family Foundation
 Dan Streepy
 Mitch Sturde
 Sheila A. Suleski
 Carol K. Suleski
 Stephen Suleski
 Mark Sullivan
 Summit Painting, LLC
 Sun Microsystems, Inc.
 Annie Sundquist
 Super 8 Motel of Belgrade
 Superior Management
 Consultants
 Jodi Surfes
 Michael M. Sussman
 Julie and Patrick Swearingen
 Roselyne Swig
 Stephen Swindle
 Vicki Switzer
 Melvia Sykes
 Marianne and Lawrence Talon

Michael Tamasi
 Robert Tamkin
 Britton Taplin
 Kate and Jim Taucher
 Temple Taylor
 Marilyn and Don Taylor
 Ronald Taylor
 Stacy Taylor
 Sharon and Chuck Teetsel
 Jonathan Teller-Elsberg
 Deette D. Templeman
 Elizabeth and Jack Terzian
 Carol and Joseph Tesch
 Mary Tesitor
 Thank You Masked Man
 Services
 Mildred and Bradley Thayer
 Steven Thibodeaux
 Thomas G. Jones Construction
 Christina and Walker Thompson
 Sally and Richard D. Thompson
 Sheila Thompson
 Gerald Thompson
 Tim Thomsen
 Allison Jones Thomson
 Carl Thorngren
 Cheryl A. Thorp
 Camille Thurston
 Chad Tidwell
 Juliet Tigner
 Steve Tillman

“My experience at the CAN DO program gave me much more insight and therefore compassion for what it’s like to be diagnosed and live with MS.”

—Sloane D.

CAN DO program participant, support partner

Timberidge Plumbing and Heating Inc.
Tin Man Inc.
Barbara Tindall
Stephanie and Thomas Tinney
TMG Morris Group Realty
Melissa and Kenneth Tobler
Elizabeth Todd
Carol Togneri and Brian Mullen
Anne and James Togneri
Kathleen Togneri
Nancy Tompkins
Nadeem Toor
Sandy Towne
Inge and Jason Travis
Dorothy Trinen
Dilip D. Tripathy
Stephanie and David Tryba
Gary Tubman DDS
Tucci Investments
Richard D. Tucker
Shawn Tucker
Rebecca M. and Samuel H. Tupman
Barbara Tweedy
Toni Tygart
Daniel Tytler
Unilever United States Foundation
UPS
Gretchen and Willard L. Van Ert
Ward L. Van Scoyk
Marja and Gerard J. VanderBeek
Fraida Varah
Miles Venzara
Vermont Organic Provision Company, LLC
Amanda Vesely
Viking Ski Shop

Paul R. Viosca
Jason Vogel
Rick Vogel
Marcy Voleker
Monica and Daniel Voltz
Susan Von Posern
John Von Schrader
Alexandra Von Wichman
Peter Voss
Nancy Vydra
Lori and Chuck Wachendorfer
Wachovia Foundation
Carol S. and R. Bruce Wadlington
Carol and Ron Waeckerlin
Barbara Waldeck
Jenny and Gary Wall
Elsa and Junian Waller
Jake Walsh
Uriah Todd Walsh
Katie Walsh
Loretta M. and Kirk W. Walters
Wapiti Landscaping, Inc.
Wapiti Woolies
Kathy E. and Glenn Ward
Washington Mutual
Chad Waters
Daniel Watkins
Danielle N. and Frank T. Way
Catherine E. Wease
Wedco Inc.
Angela Jill Wehrli
Jean K. Wehrli
Jill A. Wehrmeister
Diane M. and Richard D. Weigand
Bill Wells
Howard West
Western Michigan Credit Union
Paul S. Weyman
Kristi Whalen

Whispering Vine Wine Company
Andrea T. and Mark H. White
Jonathan T. White
Ryan Whitten
Gail and Paul Wickes
Silvia Wikler Finger and David Finger
Judith and Jerome Widlow
Amy Wildstein
Marilyn J. and Dennis A. Wiley
Matthew Wiley
Holly Wilhoite
Elizabeth and James Wilkerson
Margaret Lynn and James G. Williams
Teresa Williams
David Wilson
Lisa Wilson
Eric Wilson
Wilson Medical Specialties, Inc.
Barbara and William Winchell
Wining Women LLC
Erin and Jason Winters
Betty Witmer
Joyce and Alan Wizer
Geoffrey C. Wolf
Flora B.W. Wolf-DeVisser and Frederick D. Wolf
Vicki and John Wolfe
Anita E. Wong
Cynde and James Wood
James L. Woolner
Marcia Wooster and Duane Robinson
Trace Worthington
Robin and Will Wottowa
Morgan Wright
Wydman and Associates, Inc.
Xcel Energy
Tom Yaley
Yampa Valley Engineering Inc.

Kay A. Yanacheck and Thomas Reeves
Carin E. and Amir J. Yates
Joanna B. and John W. Yaukey
Michael Yerkovich
Brian Young
Rosario and Harold Young
Jen and Greg Young
Aaron Youngdahl
Jon Zalesne
Patricia A. and Thomas H. Zehner
Tamela S. Zimmerman
Michael Zimski
Paul Zimski
Sandra Zimsky
Jack Zoller
Annette Zuccolillo
Courtne and Carl Zuckerberg

In Kind Donors \$500 and above

Ian Altman
Chris Anthony
Aquatalia
Don Baldwin
Berry and Company Public
Relations, LLC
CF Print & Graphics
Chinese Laundry
Cole Haan
Colorado Document Security
Colorado Ski and
Snowboard Museum
Craig Donaldson Associates
Crocs
Diba Imports
Ellington/Pikolinos
EPS Design and Print Inc.
Lisa Fahrmeyer
Cinda and Fred Farinacci
The FRS Company
Frye Boots
Beth and Robert Gardner
The Golden Bear
Gorsuch Ltd.
Gran Farnum Printing
Grand Targhee Ski Team
Halflinger
Nancy Hart
Jim Heath
High Country Copiers
Highland Trading Company, Inc.
Janco Partners, Inc.
Kara Vita
Bernice Kuca

Luna
Steve Madden
Jim McAlpine
Gary Milstein
Morgan Cheney
Zane Murdock
Naot
Richard G. Neustedter
New Dimensions Cleaning, Inc.
Edward D. O'Brien
Holly Ong
Petronio Ortiz
Redwood Creek Wines
Shred Alert, Inc.
Skating Club of Vail
Ski Cooper
Kindra Stanfill
Studio @tlantis
Taos Footwear and Spira
Shoes
Julie Trainum
Vail Plaza Hotel & Club
Vail Valley Foundation
Viking Ski Shop
White Horse Solutions, LLC

In Honor Of

Judith Arnett-Green
Joan Baisley
Annie Bowman
Barbara and Howard Brinton
Kate Brown
Linda Byrne
Angela Chiarelli
Doug Condrad

Rich Demasi
Robin and John Francis
Pat Frazier
Mary and Lyle French
Jimmie Heuga
Aubyn Howe
Brian Hutchinson
Janel Kiefer
Michelle Leighton
Scott McNabb
Jennifer Medina
Eleanor Miller
Michael Montanaro
Gini Patterson
Randy Schapiro
Sandy and Bob Seigel
Kathryn Smith
Annie Sundquist
Benjamin Swig
Caton Tobey
Susie Vick
Nancy Wickes
Anna Wilson

In Memory Of

Harold R. Goss
Frederick J. Howden, Jr.
Marianna Leighton
Jack Shipp
Arthur Stapler
Leslie Sukenick Cunningham

Legacy Circle

The following supporters have made
a planned gift to The Heuga Center

Brian Hutchinson
Lester and Safia Keller
Richard Neustedter
in memory of Howard Neustedter
and Marilee Neustedter
Andra L. Orebaugh
Virginia Patterson
Kim and Kevin Sharkey



Event Directors / Event Hosts

IAN ALTMAN & CHRIS FICKEL
CT Jamboree for MS
Durango, CO

CHRIS AMOROSO
Paddle for MS
Bond, CO

VINCE ARROYO & WES DEARBORN
Bluegrass Jam & Silent Auction for
Vertical Express for MS
Steamboat, CO

JANE BJORKLUND & SAFIA KELLER
Vertical Express for MS
Solitude, UT

HOWARD BRINTON
Star Power Systems/Heuga
Center Charity Golf Tournament
Sedalia, CO

PAM BURKE & BILLY-BOB GOYEN
Ski Crud Club Golf Invitational
Hayden Lake, ID
Vertical Express for MS
Schweitzer Mountain, ID

CSU THETA XI
Theta Xi Fraternity Ski-Fest for Multiple
Sclerosis
Nederland, CO

DAVID DUNCAN & WOLF GUMERMAN
Vertical Express for MS
Arizona Snowbowl, AZ

LORRAINE EAGAR & DALE HARDY
Vertical Express for MS
Boyne Mountain, MI

**CATHY FERNANDES, ERIN McDOUGALD,
KAREN WILLISON & SYLVIE RATHIER**
Vertical Express for MS
Toronto Ski Club, Ontario, Canada

JOHN FRANCIS
Golf Tournament at St. Clair Shores
Country Club
St. Clair Shores, MI

GENE FULKERSON & CATHERINE OHL
Pacific Rim Alliance 7th Annual Wine
Maker Dinner
San Diego, CA

**CHRIS PRYOR, GREAT AMERICAN BEER
FESTIVAL & VIN 48**
Great American Beer Festival Charity
Dinner
Avon, CO

TERRY HURT & MARK BALDWIN
Winter Wine & Ski Expo
Reno, NV

TERRY HURT & CAROLINE ROSS
20th Annual Alpen Wine Fest at The
Village at Squaw Valley
Squaw Valley, CA

GEORGE KAY
Vertical Express for MS
Sunshine Village, Alberta, Canada

**BERNIE KUCA, TERRY KUCA & ANNIE
SUNDQUIST**
Vertical Express for MS
Steamboat Ski & Resort, CO

TARA LANE
MS Skate-A-Thon
Vail, CO

MIKE MAROLT
"Skiing the High Line" screening
Beaver Creek, CO

SUZE MEIER
Vertical Express for MS
Sunrise Park Resort, AZ

JOSH RICHTER & CATHERINE RUDIGER
Vertical Express for MS
Squaw Valley USA, CA

SALLY & STEVE ROSENTHAL
Colorado Footwear's 3rd Annual Stepping
Up for MS -Shoe Sale with Soul
Vail, CO

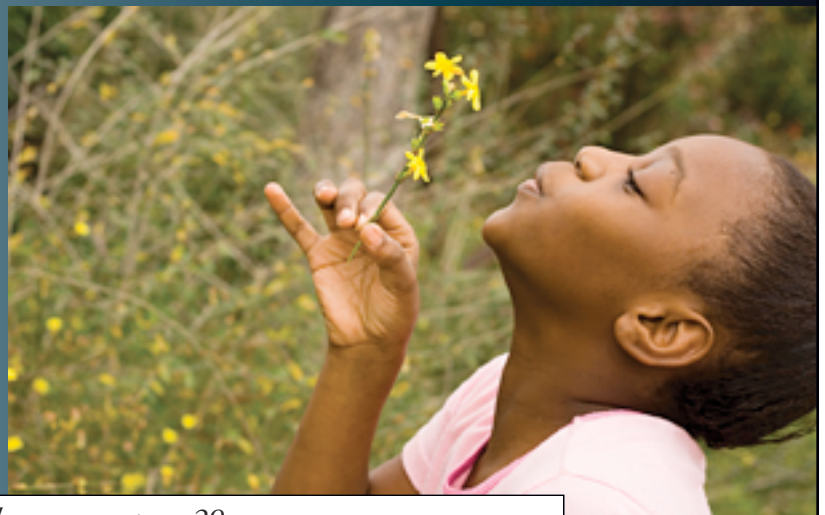
CATHERINE RUDIGER
Gear Up for Good
San Francisco, CA

JOHN SHIPP
Dusty Boot Dine Out for MS
Beaver Creek, CO
Dusty Boot Halloween Party
Eagle, CO

DAN & TERRI STEWART
Vertical Express for MS
Crystal Mountain, WA

ANNIE SUNDQUIST
2nd Annual Cellos and Friends Concert
Orlando FL

BETH VAN HORN
Vertical Express for MS
Big Sky, MT



Jimmie Heuga

Founder, The Heuga Center for Multiple Sclerosis

Campaign Fundraising and Public Education Director, Jimmie Heuga Center Endowment

HEUGA CENTER OFFICE STAFF as of December 31, 2008

Kim Sharkey, CFRE, MA, Interim CEO

Paula Canepa, Vice President of Finance & Administration

Vicki Farinacci, Special Events Manager

Kim Goodrich, Director of Development

Anna Ingram, Programs Manager

Pat Kennedy, RN, CNP, MSCN, Programs Advisor & Nurse Educator

Tara Lane, Development Associate & Executive Coordinator

Monica Tall, Director of Marketing

Sandi Tamkin, MSW, Marketing Associate

Suzanne Vondrell, Programs Coordinator



Program Staff

as of December 31, 2008

The following health care professionals staff our CAN DO, CAN DO 2 and JUMPSTART programs.

Exercise Physiologists

LISA BARE, MS, COEUR D'ALENE, ID
KEITH ENGELKE, PHD, SAN DIEGO, CA
STEVE FOSTER, MS, AAGG, JACKSON, WY
SARAH GIOVAGNOLI, MS, EAGLE, CO
TERRI GOODMAN, MS, EDWARDS, CO
MARY GREENWOOD, MS, RYT, EVERGREEN, CO
DICK HICKS, PHD, AVON, CO
ROBERT HINTERMEISTER, PHD, AVON, CO
KEVIN HOOD, MS, WHEAT RIDGE, CO
TERRI NELSON, LAKEWOOD, CO
ALEXANDER NG, PHD, FACSM, WAUWATOSA, WI
BRIDGETTE OLSON, MED, LAKE ARROWHEAD, CA
CHRISTINE OSBORNE, MS, NORTH OAKS, MN
ROGER PANKAU, MED, LITTLETON, CO
BRUCE VALENTINE, MS, DENVER, CO
ANDREA WHITE, PHD, SALT LAKE CITY, UT

Occupational Therapists & Speech/Language Pathologists

BETH BULLARD, OTR, FORT COLLINS, CO
MAUREEN DEVEREAUX, OTR/L, CES, MINNEAPOLIS, MN
JANET DeCLARK, MA, CCC/SLP, EDWARDS, CO
CINDY GACKLE, OTR/L, MSCS, LAKE ELMO, MN
JULIANN HANSON-ZLATEV, OTR, DENVER, CO
DONNA JENSEN, OTR/L, WOODBURY, MN
LAURA KINGSTON, OTR/L, PORTLAND, OR
STEVEN KOSEK, MS, CCC-SLP, MINNEAPOLIS, MN
MARY LENLING, OTR/L, TOWER LAKES, IL
PAMELA H. MILLER, MA, CCC-SLP, DENVER, CO
ANN MULLINIX, OTR/L, MINNEAPOLIS, MN
KATHLEEN NALBERT, OTR, NEW BERLIN, WI
ANDREA SELZER SILVERMAN, MA, OTR, MENDOTA HEIGHTS, MN
LINDA WALLS, OTR, ELLICOTT CITY, MD

Psychologists

PEGGY CRAWFORD, PHD, CINCINNATI, OH
DAVID ENGSTROM, PHD, ABPP, SCOTTSDALE, AZ
ROSALIND KALB, PHD, WESTPORT, CT
JUDE MEYER, Psy.D., GREENWOOD VILLAGE, CO
DEBORAH MILLER, PHD, LISW, CLEVELAND HEIGHTS, OH
TOBY HUSTON, PHD, AURORA, CO

Physical Therapists

SUSAN ANACKER, MSPT, SHOREWOOD, MN
LAURIE BEEMAN-DEMAYO, MSPT, LIGONIER, PA
TARA BENES, PT, MOUNT JOY, PA
KIT CONCILUS, PT, MS, OCS, PITTSBURGH, PA
GARY CRANDALL, MS, PT, VOORHEES, NJ
GREG FARMER, MPT, BOISE, ID
MARY KAY FOLEY, PT, HAILEY, ID
MAG KLEIN GALLAND, PT, DURANGO, CO
DEB GEE, MA, PTA, WILSONVILLE OR
BETH GIBSON, PT, TUCSON, AZ

LIBBY HARNOIS, PT, TOWSON, MD
MICHELE HARRISON, PT, DENVER, CO
CINDA HUGOS, MS, PT, LAKE OSWEGO, OR
BRIAN HUTCHINSON, PT, MSCS, EAGLE, CO
SUSAN KUSHNER, MS, PT, VALENCIA, PA
JOANNE MAYER, PT, WESTMINISTER, CO
STEPHEN MOLLOY, PT, CINCINNATI, OH
ERIN MURRAY, PT, WINNIPEG, MB
GINI PATTERSON, PT, GOLDEN, CO
CHARLIE REZBA-KUMASHIRO, PT, KANEHOE, HI
TAMMY ROEHRS, PT, MA, NCS, FORT CALHOUN, NE
MANDY ROHRIG, PT, DPT, OMAHA, NE
DR. KENNETH SEAMAN PT, DPT, ACE TRAINER, NEWARK, DE
JAN SHARP, RPT, DRAPER, UT
JIM STEPHENS, PT, PHD, CFP, HAVERTOWN, PA
MATT SUTLIFF, PT, TWINSBURG, OH
VICTORIA SZWAJCKER, BScPT, VANCOUVER, BC
KAREN TARBUCK-NELSON, PT, MINNEAPOLIS, MN
JEANNE TATUM, MS, PT, PRAY, MT
JANE WETZEL, PHD, PT, WEXFORD PA
LYNN WILLIAMS, PT, PENROSE, CO

Physicians

WILLIAM BENTLEY, MD, NEUROLOGY, AURORA, CO
JIM BERGMANN, MD, INTERNAL MEDICINE, COLCHESTER, VT
JONATHAN CALKWOOD, MD, NEUROLOGY, EDINA, MN
JON C. FEENEY, MD, FAMILY PRACTICE, VAIL, CO
GEORGE GARMANY, MD, NEUROLOGY, BOULDER, CO
BARBARA GIESSER, MD, NEUROLOGY, LOS ANGELES, CA
PAULA R. HEADBLOOM, MD, OB/GYN, MIDLAND, MI
SUSAN KALOTA, MD, UROLOGY, TUSCON, AZ
DANIEL KANTOR, MD, NEUROLOGY, PONTE VERDA, FL
JANICE MILLER, MD, NEUROLOGY, BOULDER, CO
BARRY MOLK, MD, CARDIOLOGY, CASTLE ROCK, CO
ROBERT REMIS, MD, FACS, UROLOGY, COLUMBIA, MO
JOHN SCHAFFER, MD, NEUROLOGY, SACRAMENTO, CA
RANDALL SCHAPIRO, MD, NEUROLOGY, EAGLE, CO
KAREN THERIOT, MD, PHYSIATRY, MORRISON, CO

Nurses

GAIL HARTLEY, NP, MSCN, MONROVIA, CA
PATRICIA KENNEDY, RN, CNP, MSCN, MORRISON CO
AMY STANWOOD, DN, DENVER, CO

Other Healthcare Specialists and Staff

LYNN ALBERS, NMT, CMT, EAGLE, CO
BOB ANDERSON, PALMER LAKE, CO
DENISE NOWACK, RD, SANTA MONICA, CA
BALDWIN SANDERS, MS, RD, LDN, SYLVA, NC
PATTI SCHAPIRO, RD, GOLDEN, CO
DENNIS VERNON, RRT, SEAL BEACH, CA



Credits

Thank you to those who generously contributed to this Year in Review at no charge.

Lisa Fahrmeier

Café Lisa Graphic Design

lisa@cafelisa.com

www.cafelisa.com

Chris Aubel

High Country Copiers

Edwards, CO

970.845.7870

chris@highcountrycopiers.com

Jimmie Heuga's 2008 induction into the World Sports Humanitarian Hall of Fame with Vlade Divac and Warrick Dunn. Heuga was honored for founding The Heuga Center.

“I've always been dedicated to maintaining my overall health because it helps me live the best life possible with my MS. And I look forward to helping others overcome their challenges through our CAN DO, CAN DO 2 and JUMPSTART programs.”

—Jimmie Heuga
Heuga Center Founder

THE HEUGA CENTER
FOR MULTIPLE SCLEROSIS

PROMOTING HEALTH, CREATING HOPE

*The Heuga Center for Multiple Sclerosis • www.heuga.org • 1-800-367-3101 • info@heuga.org
27 Main Street • Suite 303 • Edwards, Colorado 81632 • 970-926-1290 • 970-926-1295 fax
Internal Revenue Service 501(c)(3) • Charitable Organization Number 74-2337853*